

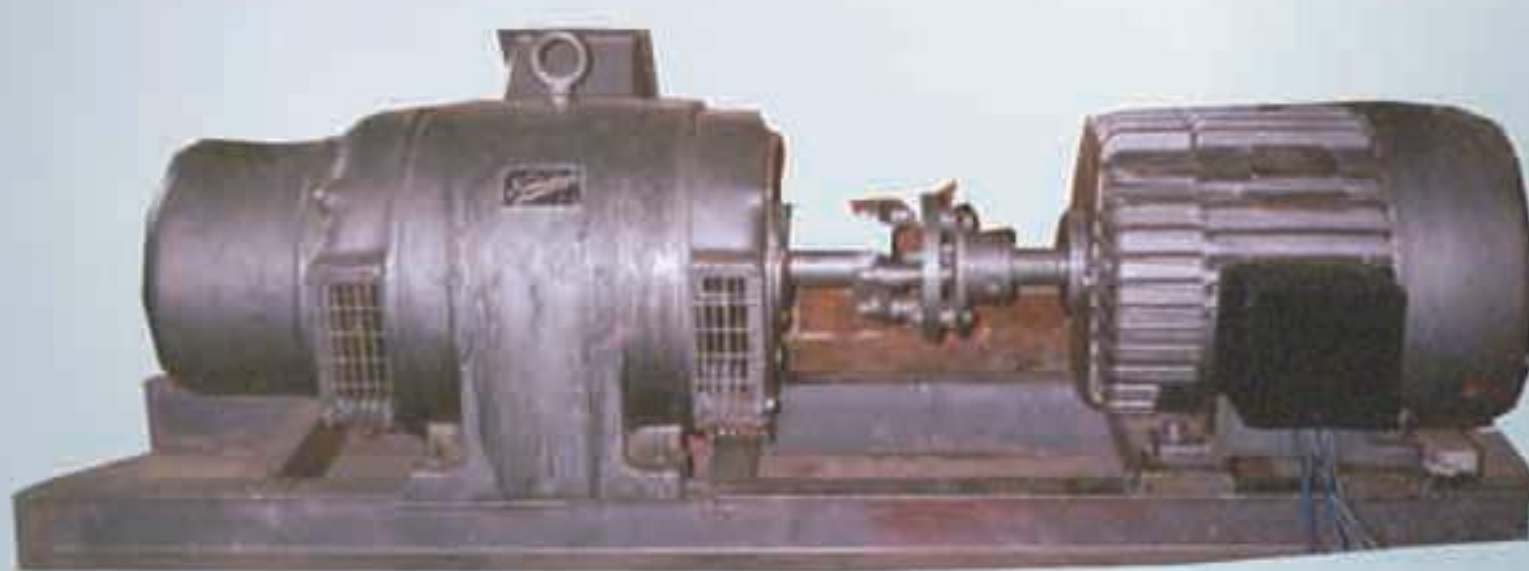
## INDUCED OVER VOLTAGE TEST SET (D.V.D.F.) 7000 Series



Control & Loading Transformer Unit



Variable Auto-Transformer Unit



Scuriel Cage Motor / Induction Motor Coupling With Sleeping Motor Unit

- Control ON/OFF switch ● Control "ON" Indicating lamp ● Push buttons for S.C. MOTOR & S.R. MOTOR ON/ OFF. ● Lamps to indicate S.C. MOTOR & S.R. MOTOR ON ● Voltmeter along with Voltmeter Selector Switch to Indicate Input & Output Voltage ● Fully Automatic Starter for Star/Delta operation ● Step up Auto transformer for output voltage.

AS ELECTROTECH Test Equipments For Quality, Accuracy & Reliability

## INDUCED OVER VOLTAGE TEST SET (D.V.D.F.) 7000 Series

AS Electrotech make popular "INDUCED OVER VOLTAGE TEST SET (D.V.D.F.) is ideal, reliable to test induced over voltage of those Distribution Transformer, Power Transformer, different Step-Down, Step-up Transformers & Motors Whose Rated Voltage Is Below The 600 Volts

### TECHNICAL FEATURES :

Input : 415 +\_ 10% V, 50HZ, 3PH, 4 Wire, AC

MODEL NO.	Output Voltage	Capacity	Duty	Cooling
E.T. 7015 MOT E.T. 7030 MOT E.T. 7045 MOT E.T. 7060 MOT	0-1300 Volts with five different Tappings	1) 15 KVA (Suitable to test up to 500 KVA Distribution Transformer.) 2) 30 KVA (Suitable to test up to 1.5 MVA Power Transformer.) 3) 45 KVA (Suitable to test up to 3 MVA Power Transformer.) 4) 60 KVA (Suitable to test up to 5 MVA Power Transformer.)	Intermittent (i.e. : 1 Minute withstand Test)	Resin-Cast, Air-Natural Cooled

**MODE OF OPERATION :** The set is MOTOR-OPERATED.

Unit : 2 (two) to 4 (Four) unit will be available as per capacity.

### DESCRIPTION :

- The Control & Loading Transformer unit is made by nicely painted sturdy M.S. Sheet. The panel consists of : Mains "ON/OFF" Switch Indicating lamps to indicate MAINS "ON". Variable Auto Transformer for smooth & continuous variation of output voltage. Fully Automatic Star-Delta Switch. Start-Stop Push buttons.
- 3 phases Scuriel Cage Motor & Sleeping Motor coupled with each other are mounted on a M.S. Channel frame.
- Control Circuit, Supply Input cable, Earthing Terminal. Instruction Manual with Circuit Diagram will be supplied along with the set.

### LOADING TRANSFORMER :

One Loading Transformer of suitable capacity used in the test set is for output voltage along with different selectable voltage tappings.

### PROTECTION :

- HRC FUSES in Incoming Side
- Automatic Tripping Mechanism for protecting the H.V. Section against overload as well as short Circuit.
- Phase Failure protection circuit is provided.

### METERING :

One Volt Meter is provided to measure the input voltage. One P.T. operated Volt Meter is provided to measure the output voltage. Three Ammeters are provided to indicate individual output phase current, One Frequency meter is provided to indicate input and output frequency.

### SAFETY MEASURES :

Zero Start Interlocking is provided to ensure that the H.V. Circuit cannot be energised unless the Variable Autotransformer is at Zero Position or brought back to Zero Position.

### OPTIONAL AT EXTRA COST :

- Digital Meter

AS Electrotech in a continuing effort to offer excellent products at a fair value & reserves the right to change models, specification and design to upgraded the own products.

Manufactured & Designed by :