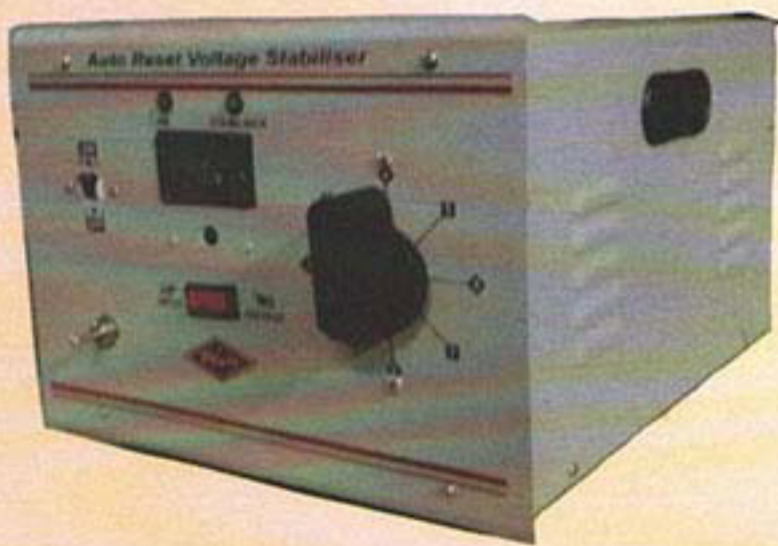
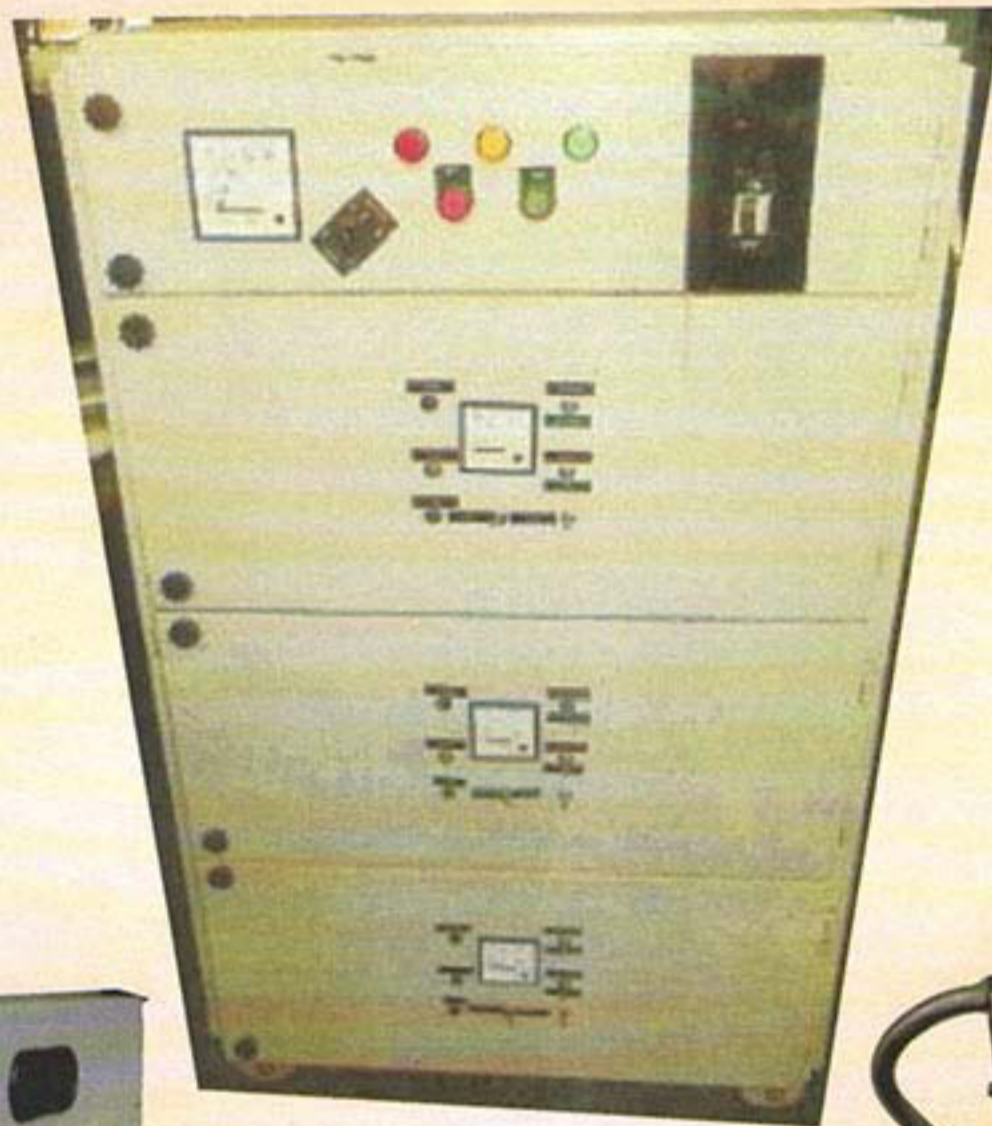


AS ELECTROTECH

Kolkata

SERVO CONTROLLED VOLTAGE STABILIZER

5000 Series



- Mains ON/OFF Switch
- Lamps to indicate control on
- Variable Auto Transformer for smooth and continuous variation of voltage
- 96 Sq. mm. AC. moving iron type voltage .
- Connected to input side 72 Sq. mm. moving iron type voltmeter.

AS ELECTROTECH Test Equipments For Quality, Accuracy & Reliability

SERVO CONTROLLED VOLTAGE STABILIZER

5000 Series

A. S. Electrotech make Servo Controlled Voltage Stabilizer ideal for supply of required voltage in those field where a gap between the required voltage and voltage source. But the power-factor (P. F.) should be Maximum (± 0.8) the set is very suitable for different types industries and establishment

Technical Features :

Input : Depend upon the input voltage source as available.

Model Operation : Motor operated

Capacity : Depend upon customers' require

Duty : Continuous.

General Arrangement :

The set will be consisting of the following :

H. T. Transformer, Control Circuit Instruction manual will be supplied along with the set

Transformer :

The Transformers used in the set are dry type and air-natural type.

Protection :

1. Beside main switch in the input side 'ON' and one 'OFF' push button switch and contact or provides a snap acting automatic tripping of circuit.
2. Set Can be operated both manually and automatically as per requirements. Although it is better to operate the set in automatic mode.
3. Voltage adjusting facility is provided in the set.
4. Voltmeter selector switch is provided to show the every phases input voltage.
5. Toggle switches are provided for increase-decrease of operating every three phase. although the toggle switches are always kept in increase position for automatic operation.
6. Toggle switches are provided for input-output selection of every phase in output position.

Motoring :

96 Sq. mm. voltmeter is provided for mains voltage indication and three nos. of voltmeter are provided in every phases for voltage indication of every phase differently.

Test Set Housing :

All the Components are housed within a nicely painted Cabinet provided with wheels. M. S. Buffer may be provided instead of wheels as per customers requirements. four Nos. doors are provided in front side and one no. of door is provided in backside for easy maintenance.

Features that can be provided at extra cost : # Digital Metering

A.S.Electrotech is always in a continuous effort to offer excellent products at a fair price & reserves the right to change models, specification and design to upgrade its own products.

A.S.Electrotech Test Equipments For Quality, Accuracy & Reliability